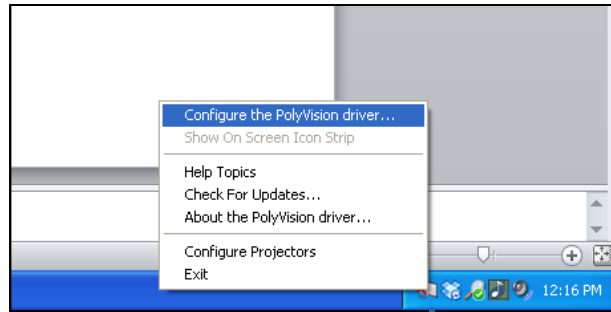




New Eno User Defined Icons



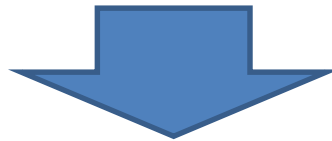
1



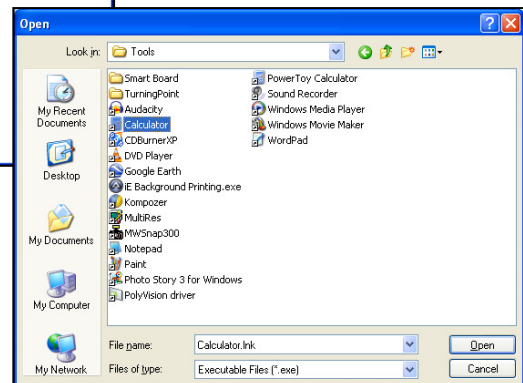
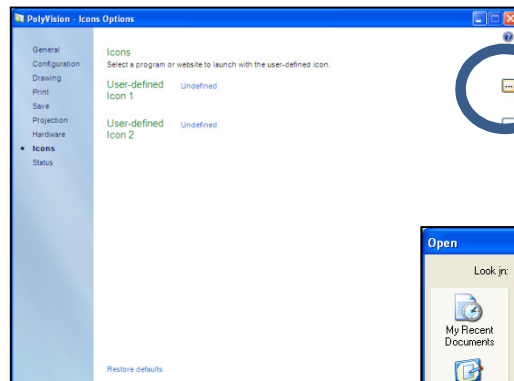
Click the PolyVision Driver Icon and choose "Configure PolyVision Driver"



Eno's New User Defined Magnet Icons



2



Click "Icons" - then the icon on the right hand side. This will open a window that you can use to browse to the program you want to open. For example, you could make button one launch the calculator in the tools folder.

Plug Into Learning

Updated 9/7/2011